

1	09/07/2019	FC	First Issue.
Rev	Date	By	Comment

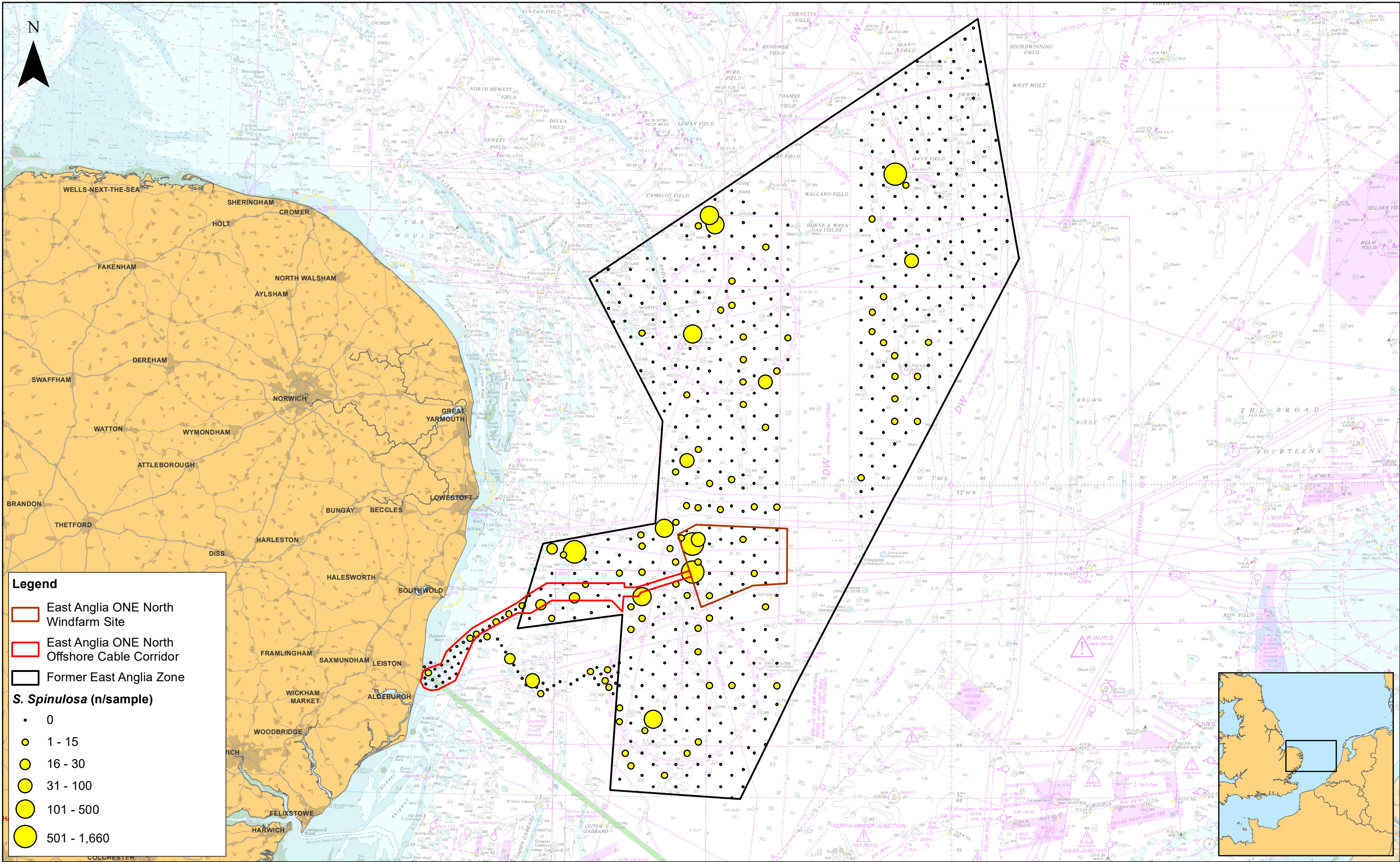
1	09/07/2019	FC	First Issue.
Rev	Date	By	Comment

Prepared:	FC	Checked:	PM
Approved:	PP		

1:225,000	Scale @ A3
Source: © MSL, 2011. © Bibby, 2016. © The Crown Estate, 2019. Contains OS data © Crown copyright and database right, 2019. © British Crown and Oceanwide, 2019. All rights reserved. License No. EIMS-EX01-548150. Not to be used for navigation.	
This map has been produced to the latest known information at the time of issue, and has been produced for your information only. Please consult with the SPR Offshore GIS team to ensure the content is still current before using the information contained on this map.	
To the fullest extent permitted by law, we accept no responsibility or liability (whether in contract, tort (including negligence) or otherwise in respect of any errors or omissions in the information contained in the map and shall not be liable for any loss, damage or expense caused by such errors or omissions.	

East Anglia ONE North	
Sabellaria Spinulosa Abundance	

Drg No	EA1N-DEV-DRG-IBR-000838		
Rev	1	Datum: WGS 1984	
Date	09/07/19	Projection: Zone 31N	
Figure	9.12a		



1	09/07/2019	FC	First Issue.	Checked:	PM
Rev	Date	By	Comment	Approved:	PP

1:630,000	Scale @ A3	Prepared:	FC
Source: © MESH, 2014. © Bbby Offshore, 2018. © The Crown Estate, 2019. Contains OS data © Crown copyright and database right, 2019. © British Crown and OceanWise, 2019. All rights reserved. License No. EM-SEK01-548150. Not to be used for navigation.			
This map has been produced to the latest known information at the time of issue, and has been produced for your information only. Please consult with the SPR Offshore GIS team to ensure the content is still current before using the information contained on this map.			
To the fullest extent permitted by law, we accept no responsibility or liability (whether in contract, tort (including negligence) or otherwise) in respect of any errors or omissions in the information contained in the map and shall not be liable for any loss, damage or expense caused by such errors or omissions.			

East Anglia ONE North

Sabellaria Spinulosa Abundance in the Context of the Former East Anglia Zone

Drg No	EA1N-DEV-DRG-IBR-000839		
Rev	1	Datum: WGS 1984	
Date	09/07/19	Projection: Zone 31N	
Figure	9.12b		